

View the installation video on our website: www.luvanto.com



Fitting Instructions- Herringbone

Important things you must know before you start:

- A minimum **5mm expansion gap** must be left around all perimeter walls to allow the natural movement of the floor when the room temperature changes.
- For installations larger than 100m², please contact QA Flooring directly for advice on the individual installation.
- Luvanto Click Herringbone must only be used with underfloor heating operating at temperatures up to 27°C.
- Luvanto Click Herringbone must not be installed in areas subject to a lot of direct sunlight (eg in conservatories or around large patio doors).
- Long exposure to direct sunlight (through windows, patio doors, etc.) may discolour the floor over time. Use soft furnishings (eg. window blinds, rugs, etc.) to avoid exposure to sunlight as much as possible.
- Luvanto Click Herringbone flooring can be fitted directly to the subfloor, as long as the subfloor is perfectly flat and free of oil, grease and other contamination.
- We recommend fitting Luvanto Click Herringbone over QA SoundClick or SoundBarrier underlay, as this will make your floor quieter to walk on. It will also reduce wear and tear to your floor, keeping it looking great for years to come. The flooring **must not be fitted over any other underlay than the above**, as this will invalidate the Warranty.
- For a really neat finish around the perimeter of the room, use the colour-matched QA Finishing Strip to conceal the expansion gaps that you need to leave. It will also hide any rough cuts next to the skirting boards. **Do not fill the expansion gaps with silicon or any type of filler.**
- These fitting instructions must be followed exactly, to avoid invalidating the Warranty. The responsibility to determine the suitability of the flooring for the situation, and to fit the flooring carefully and professionally, lies only with the installer. If unsure, please consult a professional flooring fitter.

Tools recommended:

- Vacuum cleaner
- Tape measure
- Pencil
- Combination set square, or similar tool, which can be used to mark 45° angles
- Sharp utility knife
- Safety gloves

Before installation:

- Check subfloor is clean, dry and dust-free.
- Repair any imperfections, such as cracks and undulations.
- Keep room temperature constant for 24 hours before fitting. Leave Luvanto Click Herringbone flooring and SoundClick/SoundBarrier underlay in the room for this period to acclimatise, making sure all packs are lying flat on floor.
- Switch off underfloor heating at least 5 hours before laying flooring.
- Check all planks carefully for defects or differences in batch, colour or surface shine.
- Check tongue and groove of click joints are clean and undamaged.
- In each box, there are 12 planks marked 'A' on the back and 12 planks marked 'B'. Sort 'A' and 'B' planks into separate stacks before starting installation (see **Figure 1** overleaf).

Installation:

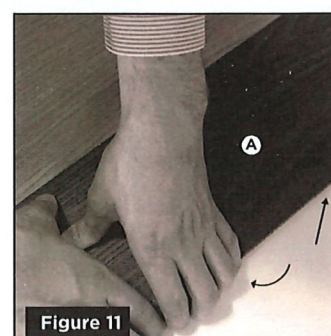
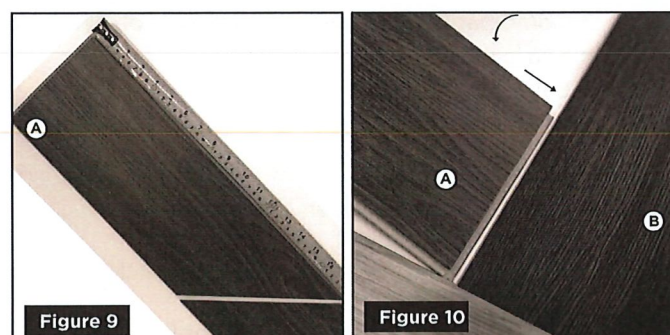
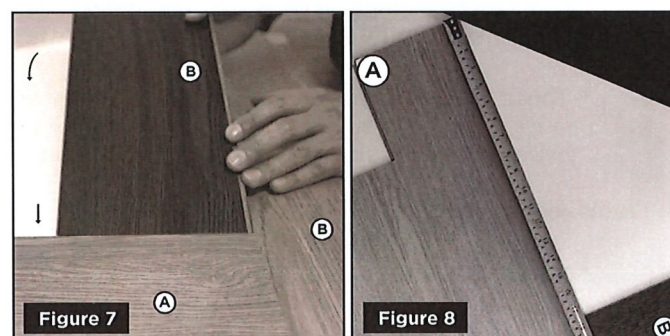
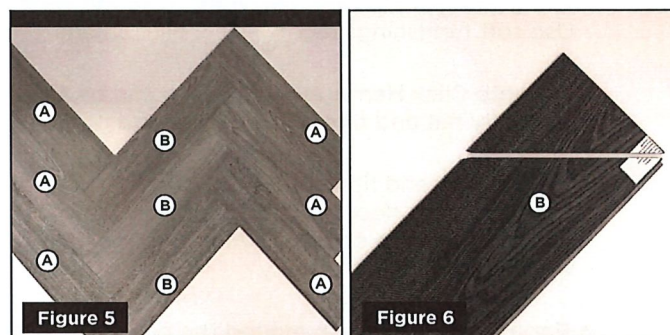
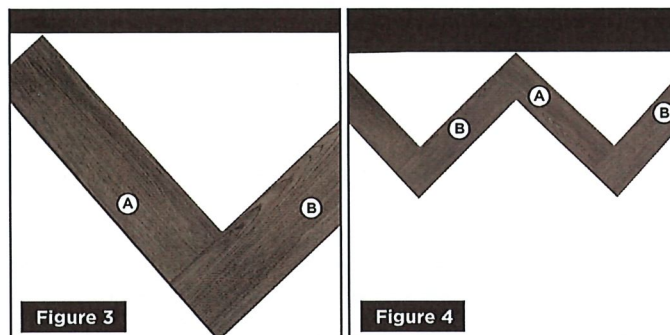
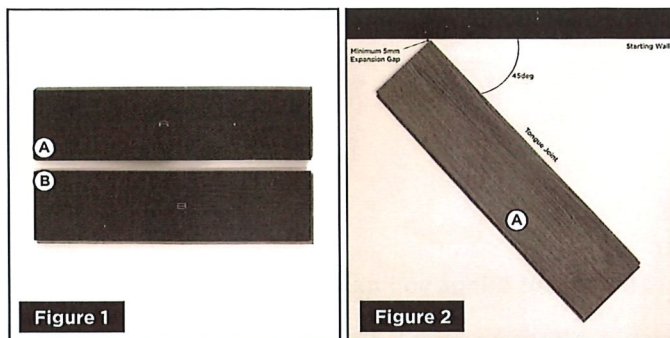
1. Unroll SoundClick/SoundBarrier underlay (black anti-slip surface on top for SoundClick), at 90° to direction you'll lay flooring, until whole floor is covered with underlay.
2. Butt up each length flush to adjoining one and fit neatly around room edge. Do not glue or tape underlay to subfloor in any area.
3. Choose a wall to start laying the floor. Don't assume it is straight - check distances to opposite wall at both ends of room, to work out best position to line up the floor.
4. To start the herringbone pattern, lay the first 'A' plank at 45° to this wall (see Figure 2).
5. Lay the first 'B' plank at 90° to the 'A' plank (see Figure 3). Lock the planks together by clicking the tongue of the 'B' plank into the end groove of the 'A' plank.
6. Continue the pattern by locking the next 'A' plank and 'B' plank together (see Figure 4). Continue this pattern working across the room from left to right. **Note** one end joint of each plank is drop-down lock so it sits loose in the groove of the next plank.
7. Continue to lay the rows, working from left to right (see Figure 5), until the whole floor is laid. Make sure there's no dirt or grit on the underlay before laying the planks down onto it.
8. Leave a minimum **5mm expansion gap** between floor and wall along all edges (including row ends). Do not glue or tape floor to underlay in any area.
9. To fill in the V-shaped gaps when you reach the finishing wall, use the Combination set square to mark the 45° cut in line with the finishing wall. Cut and fit the 'A' plank first (See Figures 8 - 10) then the 'B' plank. Repeat this process until the gap is filled in. **Note** you can use the offcuts from these pieces to fill the gaps along other walls to reduce waste cuts.
10. To cut a piece of Luvanto Click Herringbone, use a sharp knife to score top surface well. The piece will then snap along the score line. Wear protective gloves when scoring to avoid cutting hands.
11. To fill in the V-shaped gaps along the starting wall, you need to cut and fit the 'B' plank first (Figures 6 -7), then the 'A' plank (Figures 8 - 10). To do this, push the tongue of the end joint under the groove of the last full 'A' plank installed and drop the plank flat (Figure 10). Then lift the plank a bit on the free edge (Figure 11) and gently push the groove under the tongue of the full 'B' plank until it clicks together and drops flat. Repeat until the gap is filled.
12. For detail cuts around door posts and objects like radiator pipes, carefully mark the shape of required cut-out onto the piece and use a fretsaw, or jigsaw with suitable plastic blade, to cut to shape.
13. Conceal expansion gaps along perimeter walls with the Finishing Strip and finish doorways with suitable door plate.

After installation:

- Don't switch underfloor heating on for at least 24 hours, and gradually increase up to full temperature over course of 7 days after switching on.
- Do not in-fill expansion gap under any circumstances, and don't use gap to hide any cables, etc.
- Don't fix any items permanently onto, or through, the floor.

Care and maintenance ongoing:

- Don't drag heavy or sharp items across the floor, as this can scratch the surface. Use felt pads under furniture feet, chair legs, etc.
- Avoid heavy point loading directly over floor joints, so they don't get weakened.
- Use vacuum cleaner or soft mop regularly to remove dirt and grit (which can cause scratches). Do not use a steam cleaner.
- Clean and maintain your Luvanto Click floor with the Floor Care Kit to maintain the Warranty.



View the installation video on our website: www.luvanto.com